
Strathearn Preparatory Department

Safeguarding and Child Protection Policy

Author	Mrs E Andrews
Policy review date	January 2025
Next Review date	January 2026



CONTENTS

	Page
Introduction & Safeguarding Policy	3
Strathearn Safeguarding Team & other useful contacts	4
What is child abuse?	5
Signs and Symptoms of Abuse	6
Domestic Abuse- Operation Encompass	7
Confidentiality and the role of staff	7
Talking to Pupils	11
Procedures for reporting an incident of disclosed or suspected child abuse	12
Allegations against a member of staff	13
Appendix A: Summary procedures for reporting an incident of child abuse	15
Appendix B: Partnership with parents	16
How a parent can express a concern	17
Appendix C: Signs and symptoms of possible abuse	18
Appendix D: What Should I do?	20
Appendix E: Definitions and forms of Abuse	21
Appendix F: Wider Safeguarding Issues	24
Appendix G: The use of images of pupils	26
Appendix H: Incident Log	30
Appendix I: Child Protection Induction Survey for New Staff	31
Appendix J: Operation Encompass record sheet	32
Appendix K: Requirements and Agreements from External Providers	33

Child Protection Policy & Procedures

Introduction

Penrhyn, Strathearn Preparatory Department is committed to providing a safe, caring environment which promotes the protection of each individual child. The School subscribes to the principles and guidelines set out in Safeguarding and Child Protection in Schools- A Guide for Schools (DE, updated September 2024) the DE document

'Safeguarding and Child Protection in Schools' (2017), the SBNI resource 'Core Child Protection Policy and Procedures' (2017) and the DHSSPS paper 'Co-operating to Safeguard Children and Young People in Northern Ireland' (2016), which are deemed to be incorporated herein. The Policy and Appendices set out below are drawn substantially from these documents, the full text of which is freely available within the School and accessible by every member of staff.

All members of staff and governors have been issued with a copy of this Safeguarding and Child Protection Policy on an annual basis. Parents receive a paper copy of the policy when their child joins the school. The School encourage parents, pupils and staff to register for, and access, the Safer Schools NI app, funded by the Department of Education. Details of the app are sent to parents via the Penrhyn Post newsletter.

Aims of the policy

1. To promote safeguarding through the preventative curriculum;
2. To ensure staff act in the best interests of the pupil at all times;
3. To inform all staff (teaching and non-teaching), volunteers and governors of statutory requirements in relation to suspected or alleged child abuse;
4. To provide all staff, volunteers and governors with definitions of abuse and the potential signs of abuse;
5. To provide clear procedures for staff, volunteers and governors to follow in case of suspected or alleged abuse;
6. To explain the role and obligations of personnel involved in reporting such abuse; and
7. To enable pupils and parents to make a complaint or report of child abuse if necessary.

In all situations the pupil's welfare is paramount.

Safeguarding Policy

We in Strathearn Preparatory Department have a primary responsibility for the care, welfare and safety of the pupils in our charge. We will carry out this duty through our Pastoral Policy, which aims to provide a caring, supportive and safe environment, valuing individuals for their unique talents and abilities, in which all our young people can learn and develop to their full potential. We work to establish an inclusive community where all pupils and staff are treated with dignity and respect, regardless of individual differences including culture, race, religion, beliefs, gender orientation, appearance and personal capability. One way in which we seek to protect our pupils is by helping them learn about the risks of possible abuse, helping them to recognise unwelcome behaviour in others and acquire the confidence and skills they need to keep themselves safe.

All staff and volunteers have been subject to appropriate background checks. The staff of Strathearn Preparatory Department also have adopted a Code of Conduct for behaviour towards pupils. This Code is set out in a separate document, *Strathearn School - Code of Conduct for Staff and Volunteers*.

The *Safeguarding and Child Protection Policy* should be read in conjunction with a range of other school policies which, together, ensure that procedures are in place to keep pupils safe. These policies include:

Pastoral Policy, Anti-bullying policy, Educational Visits Policy and Procedures, E-Safety Policy, Safe-Handling and Reasonable Force, Attendance Policy.

The school's ethos of safeguarding and child protection is underpinned by the Preventative Curriculum, delivered through the PDMU programme across the Foundation/Key Stages and discretely through the school's 'hidden curriculum'. Some of the content is delivered in a cross-curricular manner through a range of subject areas. The aim of the Preventative Curriculum is to empower pupils with the knowledge and skills they need to make healthy, informed life choices; with a focus on personal safety and well-being, as well as that of others in the school community and wider society.

The purpose of the following procedures on safeguarding and child protection is to protect our pupils by ensuring that everyone who works in our School - teachers, non-teaching staff and volunteers - has clear guidance on the action which is required where abuse or neglect of a child is suspected. **The welfare of the child must be the paramount consideration** of all caring adults. The problem of child abuse will not be ignored by anyone who works in our School, and we know that some forms of child abuse also constitute criminal offences.

STRATHEARN SCHOOL SAFEGUARDING TEAM 2024-25

(Preparatory Department)

Chair of Board of Governors:	Mrs Mallon
Designated Governor for Child Protection:	Mrs R Bailie
Principal:	Mrs N Connery
Designated Teacher (DT):	Mrs E Andrews
Deputy Designated Teacher (DDT):	Mrs N Connery & Mrs Martin (April 2024)

If you suspect a pupil might be at risk and in the absence of the DT or DDTs or any other member of staff from whom you could take advice, you should contact:

Belfast Gateway Service	028 9050 7000 (9am – 5pm)
	028 9504 9999 (out of hours)
South Eastern Gateway Service	0300 1000 300
	028 90565444 (out of hours)
CPSS helpline	028 95985590

Additional Contacts & Personnel

Vice Chairs of Board of Governors:	Mrs R Bailie Mrs P Stewart
Secretary to the Board of Governors:	Mrs M Ferguson

Any person may make contact with the Chair or Vice Chair of the Board of Governors through the Secretary to the Board. Strathearn School's phone number is **028 9047 1595** and all contacts will be dealt with in a strictly confidential manner.

What is child abuse?

Child abuse occurs in families from all social classes and cultures and it also occurs in agencies and organisations. Abusers come from all walks of life and all occupations and professions. The following is an extract from *Co-operating to Safeguard Children and Young People in NI (2016)*:

'Harm can be suffered by a child or young person by acts of abuse perpetrated upon them by others... Although the harm from abuse might take a long time to be recognisable in the child or young person, professionals may be in a position to observe its indicators earlier, for example, in the way that a parent interacts with their child' (p.12)

The following 4 categories of child abuse are defined by The DHSSPS document *'Co-operating to Safeguard Children and Young People in Northern Ireland' (2016)*:

1. **Neglect**: the persistent failure to meet a child's physical, emotional and/or psychological needs, likely to cause significant harm. It may involve a parent or carer failing to provide adequate food, shelter and clothing, failing to protect a child from physical harm or danger, failing to ensure access to appropriate medical care or treatment, lack of stimulation or lack of supervision.
2. **Physical abuse**: the deliberate physical injury to a child, or the wilful or neglectful failure to prevent physical injury or suffering. This may include hitting, shaking, throwing, poisoning, burning or scalding, drowning, suffocating, confinement to a room or cot, or inappropriately giving drugs to control behaviour.
3. **Sexual abuse**: the forcing or enticing a child to take part in sexual activities. The sexual activities may involve physical contact, including penetrative or non-penetrative acts. They may include non-contact activities, such as involving children to look at, or in the production of, pornographic material or watching sexual activities or encouraging children to behave in sexually inappropriate ways. Sexual abuse is not solely perpetrated by adult males. Women can commit acts of sexual abuse, as can other children.
4. **Emotional abuse**: is the persistent emotional maltreatment of a child. It is also sometimes called psychological abuse and it can have severe and persistent adverse effects on a child's emotional development. Emotional abuse may involve deliberately telling a child that they are worthless, or unloved and inadequate. It may include not giving a child opportunities to express their views, deliberately silencing them, or 'making fun' of what they say or how they communicate. Emotional abuse may involve bullying – including online bullying through social networks, online games or mobile phones – by a child's peers.

In March 2016, DHSSPSNI identified a new type of abuse – **exploitation**. It is the intentional ill-treatment, manipulation or abuse of power and control over a child or young person, to take selfish or unfair advantage of a child or young person or situation, for personal gain. It may manifest itself in many forms such as child labour, slavery, servitude, engagement in criminal activity, begging, benefit or other financial

fraud or child trafficking. It extends to the recruitment, transportation, transfer, harbouring or receipt of children for the purpose of exploitation. Exploitation may be sexual in nature. Children who have been exploited will have suffered from physical abuse, neglect, emotional abuse, sexual abuse or a combination of these forms of abuse.

Bullying (including Cyberbullying) is also a highly distressing and damaging form of abuse and is the subject of a separate School policy and procedural document. Please refer to the anti-bullying policy.

See Appendix E for information on other specific forms of abuse.

Signs and Symptoms of Possible Abuse

Because of their day-to-day contact with individual children, school staff - especially teachers, but also non-teaching staff, including supervisors and ancillary or support staff - are particularly well placed to observe outward symptoms of abnormality or change in appearance, behaviour, learning pattern or development. Such symptoms may be due to a variety of other causes, including bereavement or other disruption in family circumstances, or drug, alcohol or solvent misuse. Sometimes, however, they may be due to child abuse. For example:

- bruises, particularly bruises of a regular shape which may indicate the use of an implement such as a strap, or the mark of a hand; lacerations, bite marks and burns may be apparent, particularly when children change their clothes for physical education, swimming and other sports activities, or children with special educational needs are helped with toileting;
- possible indicators of physical neglect, such as inadequate clothing, poor growth, hunger or apparently deficient nutrition may be identified;
- possible indicators of emotional abuse, such as excessive dependence or attention-seeking, may be noticeable;
- sexual abuse may be reflected in physical signs, or lead to a substantial behavioural change including precocity, withdrawal or inappropriate sexual behaviour.

No list of symptoms can be exhaustive (see Appendix C for further examples). Also, it must be remembered that alternative medical, psychological or social explanations may exist for the signs and symptoms described above.

Signs such as those described above and others can do no more than give rise to concern - they are not in themselves proof that abuse has occurred. However, teachers and other staff should be aware of the possible implications of all such signs and alert attention to them, particularly if they appear in combination or are regularly repeated.

Confidentiality, Privacy and Rights

The recognition and management of appropriate confidentiality underpins an effective child protection policy. While full confidentiality *cannot and must not* be promised to those who would share child protection concerns (including pupils), it is the duty of all professionals working in this area to ensure that information is shared only on a 'need to know' basis. In Strathearn Preparatory Department, every effort will be made to protect not only the wellbeing of individuals who are being supported by our safeguarding procedures, but also their privacy and rights.

Domestic Abuse - Operation Encompass

We are an Operation Encompass school. Operation Encompass is an early intervention partnership between local Police and our School, aimed at supporting young people who are victims of domestic violence and abuse. As a school, we recognise that exposure to domestic violence is a traumatic event for young people.

Those that experience domestic abuse are negatively impacted by this exposure. Domestic abuse has been identified as an Adverse Childhood Experience and can lead to emotional, physical and psychological harm. Operation Encompass aims to mitigate this harm by enabling the provision of immediate support. This rapid provision of support within the School environment means young people are better safeguarded against the short, medium and long-term effects of domestic abuse.

As an Operation Encompass School, when the police have attended a domestic incident and one of our pupils is present, they will make contact with the School at the start of the next working day to share this information with a member of the School's safeguarding team. A form will be used by the DT to record (see Appendix J). This will allow the School safeguarding team to provide immediate emotional support to the pupil as well as giving the Designated Teacher greater insight into any wider safeguarding concerns. Where there is a lower level incident, the PSNI may choose to contact the Designated Teacher by email asking them to make contact with a named police officer. In each of these cases, the School's safeguarding team can provide immediate emotional support to the pupil. This will also give the Designated Teacher greater insight into any wider safeguarding concerns.

This information will be treated in strict confidence, like any other category of child protection information. It will be processed as per DE Circular 2020/07 'Child Protection Record Keeping in Schools' and a note will be made in the pupil's child protection file. The information received on an Operation Encompass call from the Police will only be shared outside of the safeguarding team on a proportionate and need to know basis. All members of the safeguarding team will complete online Operation Encompass training, so they are able to take these calls. Any staff responsible for answering the phone at school will be made aware of Operation Encompass and the need to pass these calls on with urgency to a member of the safeguarding team.

For further information please refer to The Domestic Abuse Information Sharing with Schools etc. Regulations (Northern Ireland) 2022.

Roles and Responsibilities

Everyone in education plays a part in keeping children and young people safe from harm and abuse.

All staff in a school, both teaching and non-teaching, have a responsibility to ensure that the protection and welfare of children is paramount. This also extends to any volunteers accepted to work in the school during school hours when pupils are on the premises. Contact should be made through appropriate channels.

Responsibilities of Board of Governors

The Education and Libraries (Northern Ireland) Order 2003 places a statutory duty on Boards of Governors (BoG) to:

- Safeguard and promote the welfare of pupils.
- Have a written child protection policy, which is reviewed annually
- Specifically address the prevention of bullying in school behaviour management policies.

All Governors in Strathearn are provided with initial child protection training with the Chair and Designated Governor for Child Protection undertaking full CPSS training. All Governors undertake refresher Child Protection training every term of office (four years).

Responsibilities of the Safeguarding Team

This team includes the Chair of the Board of Governors, the Designated Governor for Child Protection, the Principal (as Chair) and the Designated Teachers for Strathearn and Strathearn Preparatory Department.

The responsibilities of the team include:

- The monitoring and regular review of Safeguarding and Child Protection arrangements in the school.
- Support for the Designated Teacher in the exercise of their child protection responsibilities, including recognition of the administrative and emotional demands of the post.
- Ensuring attendance of Governors and staff at relevant training - including refresher training - in keeping with legislative and best practice requirements.

The Safeguarding Team reviews their child protection/ safeguarding practices annually using the Education and Training Inspectorate (ETI) pro-forma entitled 'Guidance for the Evaluation of Child Protection/Safeguarding'.

Responsibilities of the Chair of Board of Governors

The Chairperson of the Board of Governors plays a pivotal role in creating and maintaining the safeguarding ethos within the school environment.

In the event of a safeguarding and child protection complaint being made against the Principal /HOD, it is the Chairperson who must assume lead responsibility for managing the complaint/allegation in keeping with guidance issued by the Department and the school's own policies and procedures.

The Chairperson is responsible for ensuring child protection records are kept and for signing and dating the Record of Child Abuse Complaints annually, even if there have been no entries.

Responsibilities of Designated Governor for Child Protection

The Board of Governors delegates a specific member of the governing body to take the lead in safeguarding/child protection issues in order to advise the governors on:

- The role of the designated teachers;
- The content of child protection policies;
- The content of a code of conduct for adults within the school;
- The content of the termly updates and full Annual Designated Teachers Report;
- Recruitment, selection, vetting and induction of staff.

Responsibilities of School Principal

The Principal assists the Board of Governors to fulfil its safeguarding and child protection duties, keeping them informed of any changes to guidance, procedure or legislation relating to safeguarding and child protection, ensuring any circulars and guidance from the Department of Education are shared promptly, and termly inclusion of child protection activities on the BoG meeting agenda. In addition, the Principal takes the lead in managing child protection concerns relating to staff.

The Principal ensures that parents and pupils receive a copy, or summary, of the Safeguarding and Child Protection Policy when pupils join Strathearn Preparatory Department and at least every two years thereafter.

Responsibilities of the Designated Teacher for Child Protection

Every school is required to have a Designated and Deputy Designated Teacher with responsibility for child protection. These are highly skilled roles developed and supported through a structured training programme, requiring knowledge and professional judgement on complex and emotive issues. The role involves:

- The induction of teaching staff.
- Being available to discuss safeguarding or child protection concerns of any member of staff.
- Responsibility for record keeping of all child protection concerns.
- Maintaining a current awareness of early intervention supports.
- Making referrals to Social Services or PSNI where appropriate.
- Liaison with the EA Designated Officers for Child Protection.
- Keeping the Principal/HOD informed.
- Lead responsibility for the development of the school's Safeguarding and Child Protection Policy.
- Promotion of a safeguarding and child protection ethos in the school.
- Compiling written reports to the Board of Governors regarding child protection.

Responsibilities of Deputy Designated Teacher for Child Protection

The role of the Deputy Designated Teachers is to work co-operatively with the Designated Teacher in fulfilling her responsibilities.

The Deputy Designated Teacher works in partnership with the Designated Teacher so that she may undertake the duties of the Designated Teacher when required. Deputy Designated Teachers is also provided with the same specialist training by CPSS to help her in her role.

The Role of All Staff

All staff who work in Strathearn Preparatory Department, both teaching and non-teaching, and any volunteers accepted to work in the school need to know:

- how to identify the signs and symptoms of possible abuse;
- what the School's Child Protection procedures are, and, in particular, what the reporting procedures are;
- how to talk to children about whom there are concerns in an appropriate way, and how to record the information they have acquired; and
- who the Designated Teacher is and who will carry out her responsibilities if she is unavailable or is the subject of the complaint.

New Staff

As part of their induction programme, all new staff are provided with a copy of this Policy and are required to complete a child protection induction questionnaire (Appendix I). Staff are included in Child Protection training as soon as possible after appointment.

Recruitment, Vetting and Induction of Staff and Volunteers

Vetting checks are a key preventative measure in preventing unsuitable individuals from having access to children through the education system; schools must ensure that all persons on school property are vetted, inducted and supervised as appropriate.

The following groups must have an Enhanced Disclosure Certificate (EDC) from AccessNI **before** taking up post:

- All new, **paid**, teaching and non-teaching staff.

External Agencies and Individuals

External agencies or self-employed individuals who work with pupils in Strathearn School must have an appropriate Child Protection Policy in place which has been presented to the Safeguarding Team of Strathearn for approval or they must agree to abide by the School's Policy. Such a policy will be reviewed with the School's Designated Teacher on an annual basis and when there are key staffing changes in the child protection personnel of either party. The contractual obligation to have a Child Protection Policy in place forms part of the service level agreements that apply to all external agencies supporting the curriculum in Strathearn School. Such external agencies include coaching companies for various sports activities

Volunteers and Visitors

Volunteers who work unsupervised are required to have an EDC. Volunteers who work under supervision are not required to obtain an EDC, and School has a responsibility to monitor their supervision.

Visitors to school, such as parents, suppliers of goods and services, etc. do not routinely need to be vetted, however such visitors should be managed by school staff and their access to areas and movement within the school should be restricted as needs require. All volunteers and visitors to the School are required to sign in at reception and wear a visitor's lanyard when moving around the school. Key staff with responsibility for individual volunteers and visitors will provide appropriate supervision throughout their stay in School.

Pupils coming into the school on work experience do not require AccessNI clearance if they are fully supervised by school staff. The normal induction processes apply. (Appendix K)

Talking to Children where there are Concerns about Possible Abuse

If, at any time, a child makes a disclosure to a teacher or other member of staff that gives rise to concerns about possible abuse, or if a member of staff has concerns about a child, **the member of staff must act promptly.**

Where teachers see signs which cause them concern, they should, as a first step, seek some clarification from the child with tact and understanding. If any member of staff feels unsure about what to do if he/she has concerns about a child, or unsure about being able to recognise the signs or symptoms of possible abuse, he/she should speak to the Designated Teacher.

Care must be taken in asking, and interpreting children's responses to, questions about indications of abuse. The same considerations apply when a child makes an allegation of abuse, or volunteers information which amounts to that. In some circumstances, talking to the child will quickly clarify initial concerns into a suspicion that abuse has occurred, and point to the need for an immediate referral. Staff should be aware that the way in which they talk to a child can have an effect on the evidence which is put forward if there are subsequent criminal proceedings, and the extent of questioning should, therefore, be kept to a minimum:

- Members of staff **should not investigate** - this is a matter for the Social Services - but should report these concerns immediately to the Designated Teacher, discuss the matter with her, and make full notes.
- Staff receiving any disclosure of child abuse should follow the five steps set out in Appendix D '*What Should You do?*'
- Staff should not ask the child leading questions, as this can later be interpreted as putting ideas into the child's mind.
- Staff should not, therefore, ask questions which encourage the child to change her version of events in any way, or which impose the adult's own assumptions. For example, staff should say, "Tell me what has happened", rather than, "Did they do X to you?"
- The priority at this stage is to actively listen to the child, and not to interrupt or try to interpret if she is freely recalling significant events (*the child must not be asked to unnecessarily recount the experience of abuse*), and as soon as possible afterwards to make a record of the discussion to pass on to the Designated Teacher, using the Incident Log template (see Appendix H). The note should record the time, date, place and people who were present, as well as what was said. Signs of physical injury observed should be described in detail, but *under no circumstances should a child's clothing be removed nor a photograph taken.*
- Any comment by the child, or subsequently by a parent or carer or other adult, about how an injury occurred, should be written down as soon as possible afterwards, quoting words actually used.
- Staff should not give the child or young person undertakings of confidentiality, although they can and should, of course, reassure that information will be disclosed only to those professionals who need to know.
- Staff should be aware that their note of the discussion may need to be used in any subsequent court proceedings. *It is therefore essential that accurate contemporaneous records are maintained.*
- Staff should **not** ask the child to write an account of their disclosure for the record.

In Summary

✓ Listen to the pupil sensitively and carefully. Support the child for telling you.	× Do not ask leading questions which can later be interpreted as putting ideas into the pupil's mind
✓ Give reassurance but tactfully explain you will have to tell someone else, but only those who need to know.	× Do not give a promise of confidentiality – it cannot be kept.
✓ Say, for example, "Tell me what happened."	× Do not make suggestions, for example, "Did they do X to you?"
✓ If possible establish what happened, where it happened, when it happened and who did it.	× Do not interrogate and do not dwell too much on the alleged perpetrator.
✓ Immediately afterwards make notes especially actual words used.	× Do not write as the pupil talks to you. Give your whole attention to the pupil.
✓ Immediately afterwards talk to the Designated Teacher who will inform the Principal/HOD	× Any information received from the child should be held in strict confidence.

Procedures for reporting suspected (or disclosed) child abuse

- The Designated Teacher will discuss any concerns about the safety of the pupil with the HOD/Principal as a matter of urgency to plan a course of action, including whether, in the best interests of the child, the matter needs to be referred to Social Services and to ensure that a written record is made. The Safeguarding Governor or Chair of the Board is consulted if required and subsequently kept informed of the course of action taken. If there are concerns that the child may be at risk, the School is obliged to make a referral. Unless there are concerns that a parent may be the possible abuser, the parents will be informed immediately.
- The HOD / Designated Teacher / Safeguarding Governor / Chair may seek clarification or advice and consult with one of the Belfast Area Education Authority Designated Officers or a Duty Social Worker before a referral is made. No decision to refer a case to Social Services will be made without the fullest consideration and on the basis of appropriate advice. The safety of the child is our first priority.
- Where there are concerns about possible abuse, the Designated Teacher / HOD/ Principal will inform the
 - Social Services and
 - the EA Designated Officers for Child Protection

This may be done initially by telephone if urgent, and in writing by means of a UNOCINI (*Understanding the Needs of Children in Northern Ireland*), sent in an envelope marked 'CONFIDENTIAL'.

- The above procedures will apply unless the complaint is against the Designated Teacher, her Deputy, the Principal, or the Chair, in which case the remaining members of the School Safeguarding Team will be informed and take the necessary action.

The Chair of the Board of Governors will ensure that the application of the Safeguarding and Child Protection Policy is monitored, that confidential records are maintained, and that regular reports are made to the Board of Governors.

Dealing with Allegations of Abuse made Against a Member of Staff

Where a complaint about possible abuse is made against a member of staff of the school, the procedures in DE Circular 2015/13 and the *Strathearn Preparatory Department Complaints Procedures (2017)* will be followed. In all decisions the child's welfare is the paramount consideration and the child should be listened to and her concerns taken seriously.

All allegations should be reported immediately, normally to the Principal or Designated Teacher for Child Protection/Deputy Designated Teacher for Child Protection. A Lead Individual should be identified to manage the handling of the allegation from the outset. This would normally be the Principal / HOD or the designated teacher. If the Principal is the subject of concern, the allegation should be reported immediately to the Chair of the Board of Governors, Deputy Chair, Designated Governor for Child Protection and the person identified to be the Lead Individual. In the interests of all involved the issue should be dealt with as a priority and unnecessary delays should be avoided. Every effort to maintain confidentiality and guard against unwanted publicity must be made. Allegations should not be shared with other staff or children.

Contacts

Safeguarding Team

The following staff are available in School and can be contacted via telephone (028 9047 4684) or email (info@penrhyn.belfast.org.uk):

Safeguarding Team member	Role
Mrs E Andrews	Designated Teacher
Mrs L Martin	Deputy Designated Teacher
Mrs N Connery	Principal (028 9047 1595)

Child Protection Support Service (CPSS)

The helpline number is **028 9598 5590** and operates from Monday to Friday from 9.00am until 4.30pm.

Duty Social Worker Gateway Team (Health & Social Care Trusts)

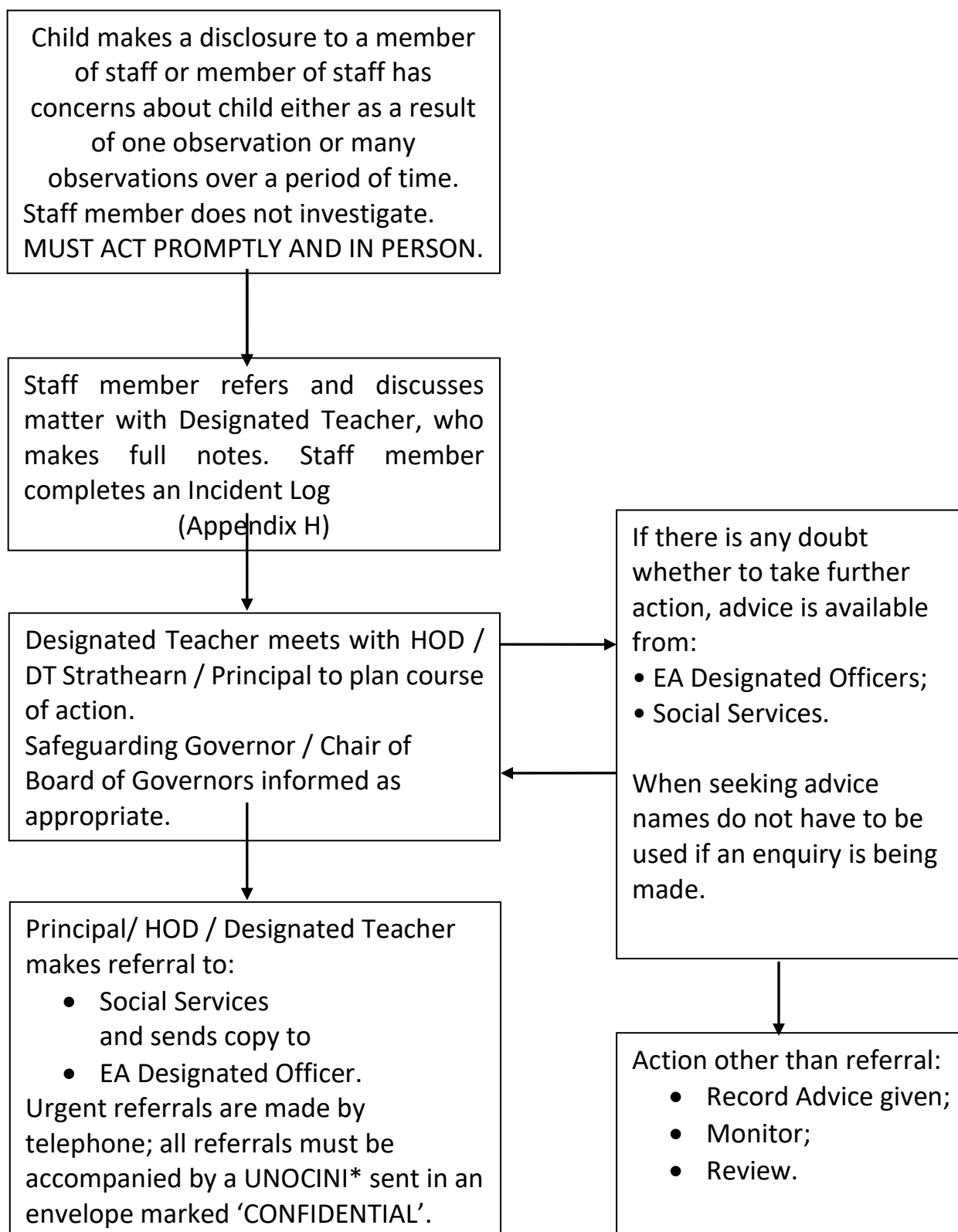
Gateway Team	Contact Number
Belfast	028 9050 7000
South Eastern	0300 1000 300

PSNI

The Central Referral Unit (CRU) based in Antrim Road PSNI station is part of the Public Protection Unit and is the central referral point for child sexual and physical abuse allegations. Where a matter is being reported to the PSNI as an alleged crime, the Designated Teacher will seek advice from CPSS prior to reporting to the Police. Contact with CRU will be made via email using the following email address: cru@psnii.police.uk.

Appendix A

Summary Procedures for Reporting an Incident of Child Abuse



**Understanding the Needs of Children in Northern Ireland*

Appendix B

Partnership with Parents

The School will help parents to understand its responsibility for the welfare of all the children in its charge. This is an aspect of the ongoing work of fostering trust and good relationships with parents. Parents will be made aware, through a flyer, (sent to all new pupils and to existing pupils every other year,) of the School's Safeguarding and Child Protection Policy, and the fact that this may require cases to be referred to the investigative agencies in the interests of the child. Parents will be reminded, at least annually, of the importance of notifying the School when someone other than a parent or usual carer will be picking the child up from School or if there are any court orders affecting access to the child.

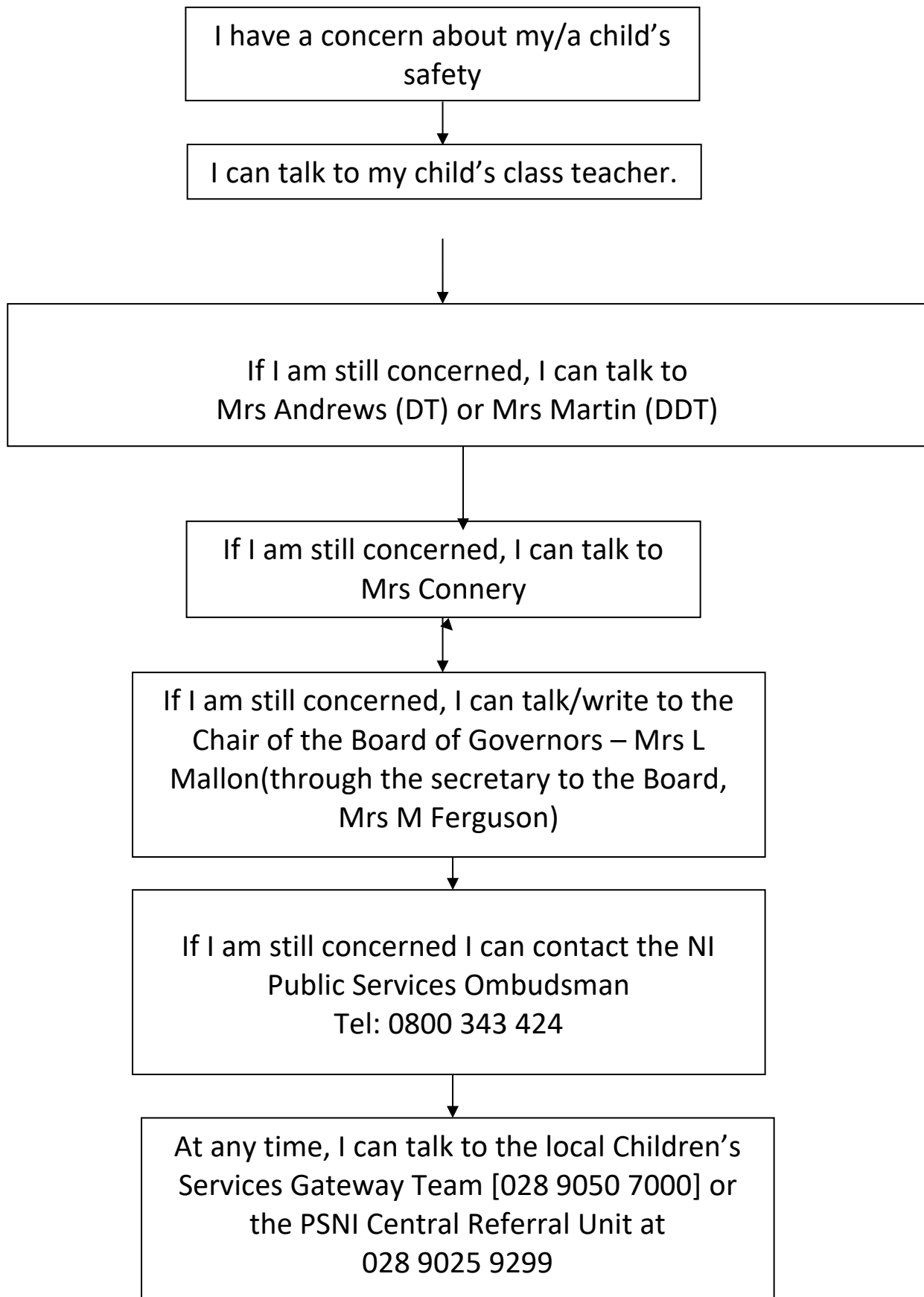
If a case of suspected abuse is referred to the investigative agencies, the School will continue to inform parents of the educational progress of the child.

How a parent can make a complaint about possible child abuse

Parents also need to know how they can make a complaint, and the recourse that they have if they are not satisfied with the outcome. The School will include in its parent information pack a summary of its arrangements for parents to make known to staff any concerns they may have about the safety of their (or another) child: often, this will be by speaking directly to the HOD, but other arrangements, such as informing the Designated Teacher, may also be appropriate. The names of at least two people within the school whom parents may contact will always be given. The statement will also make clear what will happen when any such concerns or complaints are reported

The School will make these arrangements for safeguarding and child protection known directly to the parents of new pupils each year and to the parents of existing pupils every other year, through a summarised version of this Policy.

How a parent can express a concern



Appendix C

Signs and symptoms of possible abuse (*not an exhaustive list*)

Physical Abuse – Physical Indicators

- Unexplained bruises or burns particularly if they are recurrent
- Human bite marks, welts or bald spots
- Unexplained lacerations, fractures or abrasions
- Untreated injuries

Physical Abuse – Behavioural Indicators

- Self-destructive behaviours
- Improbable excuses given to explain injuries
- Chronic runaway
- Aggressive or withdrawn
- Fear of returning home
- Reluctant to have physical contact
- Clothing inappropriate to weather – worn to hide part of the body

Neglect – Physical Indicators

- Constant hunger
- Poor state of clothing and/or personal hygiene
- Untreated medical problems
- Emaciation / distended stomach
- Constant tiredness

Neglect – Behavioural Indicators

- Tiredness, listlessness
- Lack of social relationships
- Compulsive stealing, begging or scavenging
- Frequently absent or late
- Low self-esteem

Signs and symptoms of possible abuse (continued)

Emotional Abuse – Physical Indicators

- Sudden speech disorders
- Signs of mutilation
- Signs of solvent abuse (e.g. mouth sores, smell of glue, drowsiness)
- Wetting and/or soiling
- Attention-seeking behaviour
- Poor peer relationships

Emotional Abuse – Behavioural Indicators

- Neurotic behaviour (e.g. rocking, hair twisting, thumb sucking)
- Reluctance for parental liaison
- Fear of new situations
- Chronic runaway
- Inappropriate emotional responses to painful situations

Sexual Abuse – Physical Indicators

- Soreness or bleeding in the genital or anal areas or in the throat
- Torn, stained or bloody underclothes
- Chronic ailments such as stomach pains or headaches
- Difficulty in walking or sitting
- Sexually Transmitted Infections (STIs)

Sexual Abuse – Behavioural Indicators

- Be chronically depressed
- Inappropriately seductive or precocious
- Sexually explicit language
- Low self-esteem, self de-valuation, lack of confidence
- Recurring nightmares / fear of the dark
- Outbursts of anger / hysteria
- Overly protective of siblings

Appendix D

What Should You Do?

What to do when you have cause for concern:

- RECEIVE – listen to what a child says but do not ask leading questions except to show when you have understood;
- REASSURE – ensure the child is reassured that he/she will be safe and their interests come first;
- RESPOND – only to ensure the child is safe and secure
- RECORD – make note of what you have seen or heard and the date and time on the Strathearn Preparatory Department 'Incident Log' form; and
- REFER – refer to the Designated Teacher in person and as soon as possible when you have any concern for a child

Appendix E

Definitions of Specific Forms of Abuse

Grooming: of a child is always abusive and/or exploitative. It often involves the perpetrator(s) gaining the trust of a child or, in some cases, the trust of the family, friends or community, and/or making an emotional connection with the victim in order to facilitate abuse before the abuse begins. This may involve providing money, gifts, drugs and/or alcohol or more basic needs such as food, accommodation or clothing to develop the child's loyalty to and dependence upon the person(s) doing the grooming. The person(s) carrying out the abuse may differ from those involved with grooming which led to it, although this is not always the case.

Grooming may occur face to face, online and/or through social media, the latter making it more difficult to detect and identify.

Those involved in grooming may themselves be children or young people, and be acting under the coercion or influence of adults. Such young people must be considered victims of those holding power over them.

Child Sexual Exploitation (CSE): is a form of child sexual abuse. It occurs when an individual or group takes advantage of an imbalance of power to coerce, manipulate or deceive a child under the age of 18 into sexual activity (a) in exchange for something the victim needs or wants, and/or (b) for the financial advantage or increased status of the perpetrator or facilitator. The victim may have been sexually exploited even if the sexual activity appears consensual. Child sexual exploitation does not always involve physical contact; it can also occur through the use of technology.

CSE can be very difficult to identify and a young person may not see themselves as a victim. It is important to identify vulnerability in the midst of challenging behaviour and frequent resistance to, or even apparent disregard for, professional support.

Potential indicators of CSE:

- Acquisition of money, clothes, mobile phones etc without plausible explanation
- Truancy/leaving school without permission
- Persistently going missing or returning late
- Receiving lots of texts/phone calls prior to leaving
- Change in mood – agitated/stressed
- Appearing distraught/dishevelled or under the influence of substances
- Inappropriate sexualised behaviour for age
- Physical symptoms e.g. bruising, bite marks
- Collected from school by unknown adults or taxis
- New peer groups
- Significantly older boyfriend or girlfriend

27 Strathearn School Safeguarding and Child Protection Policy

- Increasing secretiveness around behaviours
- Low self-esteem
- Change in personal hygiene (greater attention or less)
- Self-harm and other expressions of despair
- Evidence or suspicion of substance abuse

While these indicators can be useful in identifying potential risk, their presence does not necessarily

mean CSE is occurring. More importantly, nor does their absence mean it is not.

Domestic Violence and Abuse: is any threatening, controlling, coercive behaviour, violence or abuse (psychological, virtual, physical, verbal, sexual, financial or emotional) inflicted on anyone (irrespective of age, ethnicity, religion, gender, gender identity, or any form of disability) by a family member.

Any form of violence or abuse within the family setting can have significant long-term impact on children and young people. Any such cases suspected or identified by the School will be reported to the appropriate statutory agency in line with the procedures outlined in this document.

Female Genital Mutilation (FGM): is a form of child abuse and violence against women and girls. FGM comprises all procedures that involve partial or total removal of the external female genitalia, or other injury to the female genital organs for non-medical reasons. The procedure is also referred to as 'cutting', 'female circumcision' and 'initiation'. The practice is medically unnecessary, extremely painful and has serious health consequences, both at the time when the mutilation is carried out and in later life.

FGM is a form of child abuse. It is a complex issue with many men and women from practising communities considering it to be normal to protect their cultural identity. The procedure can be carried out at various stages of development and into adulthood. However, the majority of cases are thought to take place between the ages of five and eight, putting children in this age bracket at highest risk.

Harmful Sexualised Behaviour: is any behaviour of a sexual nature that takes place when:

- There is no informed consent by the victim; and/or
- The perpetrator uses threat (verbal, physical or emotional) to coerce, threaten or manipulate the victim

Harmful sexualised behaviour can include:

- Using age inappropriate sexually explicit words and phrases
- Inappropriate touching
- Using sexual violence or threats
- Sexual behaviour between children is also considered harmful if one of the children is much older – particularly if there is more than two years' difference in age or if one of the children is pre-pubescent and the other is not
- However, a younger child can abuse an older child, particularly if they have power over them – for example, if the older child is disabled.

E-safety/Internet Abuse: is considered specifically by the School's *E-safety Policy*.

The associated risks around on-line safety can be identified under four categories:

- Content risks: the child or young person is exposed to harmful material
- Contact risks: the child or young person participates in adult initiated online activity
- Conduct risks: the child or young person is a perpetrator or victim in peer-to-peer exchange
- Commercial risks: the child or young person is exposed to inappropriate commercial advertising, marketing schemes or hidden costs.

Sexting: is the sending or posting of sexually suggestive images, including nude or semi-nude photographs, via mobiles or over the Internet. There are two aspects to sexting:

- **Sexting between individuals in a relationship**
- **Sharing an inappropriate image with intent to cause distress**

Pupils need to be aware that it is illegal, under the Sexual Offences (NI) Order 2008, to take, possess or share 'indecent images' of anyone under 18 even if they are the person in the picture. In these cases, the School should contact local police on 101 for advice and guidance.

If a young person has shared an inappropriate image of themselves that is now being shared further, whether or not it is intended to cause distress, the child protection procedures set out in this Policy should be followed.

Appendix F

Wider Safeguarding Issues

Pupils may disclose information about themselves or another pupil on a wider range of safeguarding issues which may or may not, in themselves, be connected to any form of abuse. In such cases guidance should be sought from the Designated Teacher/Deputy Designated Teacher, in line with the procedures contained in this policy, to ensure that the pupil can be supported and safeguarding issues addressed. In these situations, it is almost always appropriate to inform parents and to recommend a GP appointment.

Information on the safeguarding issues identified below is taken from the **NHS.UK website**.

Self-harm: is when an individual intentionally damages or injures their body. It is usually a way of coping with or expressing overwhelming emotional distress. Sometimes when people self-harm, they feel on some level that they intend to die. Over half of people who die by suicide have a history of self-harm. However, the intention is more often to punish themselves, express their distress or relieve unbearable tension. Sometimes the reason is a mixture of both. Self-harm can also be a cry for help.

Low-mood/Depression: Difficult events and experiences can leave a person in low spirits or cause depression. It could be relationship problems, bereavement, sleep problems, scholastic stress, bullying, chronic illness or pain. Sometimes there is no obvious reason.

A general low mood can include:

- sadness
- feeling anxious or 'panicky
- worry
- tiredness
- low self-esteem
- frustration
- anger

However, a low mood will tend to lift after a few days or weeks. Making some small changes in life, such as resolving a difficult situation, talking about problems or getting more sleep, can usually improve mood. A low mood that does not go away can be a sign of depression.

Depression can include:

- low mood lasting two weeks or more
- not getting any enjoyment out of life
- feeling hopeless
- feeling tired or lacking energy
- not being able to concentrate on everyday things like school work or watching television
- comfort eating or loss of appetite
- sleeping more than usual or being unable to sleep
- having suicidal thoughts or thoughts about harming oneself

Anxiety: Anxiety is a feeling of unease, such as worry or fear, that can be mild or severe. Everyone has feelings of anxiety at some point in their life – for example, before sitting an exam or having a medical test.

During times like these, feeling anxious can be perfectly normal. However, persistent and uncontrolled worry can affect daily life and health.

Anxiety is the main symptom of several conditions, including: panic disorder, phobias, post-traumatic stress disorder (PTSD) and social anxiety disorder (social phobia).

Generalised anxiety disorder (GAD) is a long-term condition that causes a person to feel anxious about a wide range of situations and issues, rather than one specific event. People with GAD feel anxious most days and often struggle to remember the last time they felt relaxed. As soon as one anxious thought is resolved, another may appear about a different issue. GAD can cause both psychological (mental) and physical symptoms.

Anxiety symptoms can include:

- feeling restless or worried
- having trouble concentrating or sleeping
- dizziness or heart palpitations

Eating Disorders: An eating disorder is when an individual has an unhealthy attitude to food, which can take over his/her life and make him/her ill. It can involve eating too much or too little, or becoming obsessed with weight and body shape. Men and women of any age can get an eating disorder, but they most commonly affect young women aged 13 to 17 years old. The most common eating disorders are:

- anorexia nervosa – when an individual tries to keep his/her weight as low as possible by not eating enough food, exercising too much, or both;
- bulimia nervosa – when an individual eats a lot of food in a very short amount of time (binging) and is then deliberately sick, uses laxatives, restricts what is eaten, or does too much exercise to try to stop gaining weight;
- binge eating disorder (BED) – when a person regularly loses control of his/her eating, eats large portions of food all at once until he/she feels uncomfortably full, and is then often upset or feels guilty;
- other specified feeding or eating disorder (OSFED) – when symptoms of the disorder don't exactly match those of anorexia, bulimia or binge eating disorder, but nonetheless pose a risk to health.

- **Gender Dysphoria:** Gender dysphoria is a condition where a person experiences discomfort or distress because there is a mismatch between their biological sex and gender identity. It is sometimes known as gender identity disorder (GID), gender incongruence or transgenderism. This mismatch between sex and gender identity can lead to distressing and uncomfortable feelings that are called gender dysphoria. Gender dysphoria is a recognized medical condition, for which treatment is sometimes appropriate. It is not a mental illness⁶

Appendix G- The use of images of pupils

The General Data Protection Regulation, 2018 (GDPR) and Human Rights Legislation require that the school take care in the use of photographs, videos and web cams in the school environment.

- All photographs held on file (both electronic and paper) of the pupils exist in accordance with the DPA.
- Photographs and videos of the pupils taken during the year to promote the school for publicity, used in the Prospectus or in other printed material, will be subject to consent by parents. Images being used will portray the pupils appropriately attired.
- Digital video recordings may be made at various functions or of class activities. These can help encourage creativity, motivate and enthuse pupils and improve communication and team-working skills. Furthermore, they may be used for assessment purposes.
- Photographs of school staff will only be used with the consent of that staff member.
- Photographs taken for the purpose of journalism are exempt from GDPR and on all occasions the pupils will be aware that their photograph may be used.
- Photographs or film footage by parents or guardians of their children at school events is permitted under an exemption in GDPR.
- The use of camera phones or the internet to send offensive pictures to other pupils is not permitted and will be dealt with under the Discipline Code.
- Any incident of improper use of photographs should be reported to the Designated Teacher (Mrs Andrews) immediately.
- No SMART watch or device capable of taking or storing photos should be brought to school by a pupil.



To Parents of All Pupils

Dear Parent

Re: The storage and use of visual images.

You will have no doubt noticed how in Strathearn Preparatory Department we are delighted to celebrate the activities and achievements of our pupils in many ways and not least through photographs and video. On our website: www.strathearn.org.uk , in classrooms and corridors, and in publications, we display photographic records from a wide range of activities including; class presentations, from charity events, sporting activities or success of any nature. For your daughter to be involved we need to have your consent and I would ask you to read the following information and return the completed Consent Form to your daughter's class teacher within the first week of term.

Background

In line with our Safeguarding & Child Protection Policy (available at reception or on our website) we issue to all new pupils Appendix G, which deals with the storage and use of visual images. Through the policy we wish to take a pragmatic approach and allow the pupils and School to celebrate success and give credit and recognition for achievement.

Below is some background information to the policy.

An individual school photograph is taken every year, and a copy of this is held on file (both electronic and paper) in accordance with the Data Protection Act 2018/GDPR. A copy is also available for you to purchase. Other official photographs include a class photo and membership of any music groups or sports teams. A photograph will also be taken of each pupil for school records.

In addition to 'official' photographs, photographs and video may be taken at various times throughout the year, for example, pupils putting on class dramas or recording sporting or musical events.

On each occasion the pupils will be aware why video or photographs are being taken and if for publication in newspapers, the papers in which they may appear. We also use photographs and/or video recordings in our school magazine and prospectus, on Open Morning, via the School's social media channels and on other public occasions to recognise and enjoy the work of the pupils. The celebration of the success of our pupils is very natural and the girls are delighted to see video or photographs of themselves used in this way.

I hope you find this useful with regard to images taken by the school as well as any you may wish to take yourself. If you have any questions, please do contact me.

Yours sincerely

N Connery Principal



Consent form for use of images (photographs, videos, and digital images)

Penrhyn, Strathearn Preparatory Department



We use images of pupils as part of school displays, printed information, on the school's website, on social media and for publicity purposes in printed publications, such as newspapers. From time to time, Penrhyn may be visited by local media and press, who take images of school events. Pupils may appear in these images, and these may be published in local or national newspapers, or on approved websites.

To comply with the General Data Protection Regulations (GDPR) we need your consent to take images of your child and use them in the ways described above. Please tick either 'Yes' or 'No' for each criterion below, then sign and date the form and return to the school.

I give permission for my child's image to be used on the Strathearn School website Yes ☐ No ☐

I give my permission for other parents in my child's class to see photos of my child on Seesaw Yes ☐ No ☐

I give permission for my child's image to be used on the Strathearn/Penrhyn social media pages, e.g. Twitter, Instagram Yes ☐ No ☐

I give permission for my child's image to be used in marketing materials, e.g. school brochures, prospectus, banners etc Yes ☐ No ☐

I give permission for my child's image to be used in local newspapers and magazines Yes ☐ No ☐

I give permission for my child's image to be used in national newspapers Yes ☐ No ☐

I give permission for my child's image to be used within school for display purposes that might be seen by visitors Yes ☐ No ☐

I give permission for my child's to be recorded on video in class, on stage, in productions and shared with other parents Yes ☐ No ☐

This form is valid from the date of signing until your child leaves the school. Photographs and videos used for publicity purposes may continue to remain in circulation after your child has left the school. Parents have the right to withdraw their consent at any time but it may not be possible to remove images that are already in circulation or have already been published although every effort will be made to do so. If you would like to withdraw your consent, you must submit your request in writing to the Head of Department. If you have any other questions, please get in touch.

Name of pupil: _____

Year: _____

Name of person with parental responsibility (please print name):

Name of person with parental responsibility (please sign name):

Date: _____

Appendix H

STRATHEARN PREPARATORY DEPARTMENT: Child Protection/Safeguarding - INCIDENT LOG

Date of incident

Person reporting

Time of incident

Relationship to School

Place of incident

Details of incident:

continue overleaf if necessary

Person completing report (signature)

Date:

Report passed on to (name)

Date:

Action taken:

Signature:

Date:

Recorded.....Yes/No

Note to Staff: Please complete this report and hand it into the Designated Teacher or the HOD without delay

Appendix I

SAFEGUARDING AND CHILD PROTECTION: NEW STAFF INDUCTION

Name: _____

Date: _____

Post / Area of Responsibility in School:

Number of years working in a school environment: _____

Have you received and read a copy of the current Strathearn Preparatory Department 'Safeguarding and Child Protection Policy'?

YES / NO

Designated and Deputy Designated Teachers for Child Protection

The Designated Teacher for Child Protection is:

Mrs Andrews

In addition to the Principal, **Mrs Connery**, the Deputy Designated Teacher for Child Protection is:

MRS MARTIN (HOD)

It is essential that you report any safeguarding / child protection concerns to one of the teachers named above **without delay**. This should be done in person and not via email.

Training in Safeguarding and Child Protection will be organised for you as soon as possible.

Please return this form to the designated teacher without delay.



Child's name and age & DOB			
Police Reference Number		Date:	
Date and time of incident			
Address of incident			
<u>Circumstances of incident</u>			
<u>Additional school information including other Operation Encompass calls</u>			
<u>Actions taken and Impact</u>			

Strathearn School

Organisations, Self-Employed Individuals and Coaches
Involved in Extra-Curricular Provision
Requirements and Agreement



1. Purpose of Document

The purpose of this document is to regulate the safeguarding of external organisations, self-employed individuals and coaches who provide services to students of Penrhyn, Strathearn Preparatory Department.

2. Safeguarding

Any organisation / individual wishing to provide extra-curricular activities in connection with Penrhyn, Strathearn Preparatory Department. School must fulfil the safeguarding requirements of the School. These requirements are as follows:

Organisation or self-employed individual

2.1 The Organisation / Individual must have a safeguarding policy in line with the School's expectations as well as the legal obligations placed on any organisation / individual working with children. This should include:

- How signs, disclosures or allegations of abuse will be reported.
- Procedures for referring matters to a designated safeguarding officer within the Organisation, one of the Designated Teachers within the School, or to social services;
- Codes of Conduct should include specific guidance to staff/volunteers in contact with children on social media or outside of the organisation; photographs/videos; physical touch/care; behavioural management/restraint. If the Organisation / Individual is working one to one, this should also be referenced in the code of conduct and should clearly set out how volunteers/staff can manage safely working with children one on one;
- How allegations against individuals within the organisation / individuals themselves will be addressed and managed.

2.2 The Organisation / Individual will review the School's Safeguarding Policy and Code of Conduct for staff and volunteers and, where necessary defer to any aspects of this policy which are not covered in the Organisation's / Individual's own policy.

2.3. If a safeguarding issue arises the Organisation / Individual should inform the School's Designated Teacher as well as following their own safeguarding procedures.

2.4 The Organisation / Individual should be able to provide evidence of current relevant qualifications of any individuals involved in the activity being provided.

2.5 The Organisation / Individual is responsible for making sure any individuals working with pupils at Strathearn have a current Access NI check and that a certificate is provided to the School for confirmation.

2.6 The Organisation/individual is responsible for making sure any individuals working with pupils at Strathearn have completed the School's Child Protection training and any relevant documentation to confirm this is returned to the School.

Individual coach employed at Strathearn School

2.1 The Individual will review, and adhere to, the School's Safeguarding Policy and Code of Conduct for staff and volunteers.

2.2 The Individual will meet with the Designated Teacher for Child Protection to review the School's policies and arrange to undertake appropriate safeguarding training.

2.3. If a safeguarding issue arises the Individual should inform the School's Designated Teacher.

2.4 The Individual should be able to provide evidence of current relevant qualifications involved in the activity being provided.

2.5 The Individual will provide details and the relevant fee to allow the School to carry out an Access NI check.

2.6 The individual will provide the names of two referees, one of whom should have relevant recent experience of their work as a coach.

3. Risk Assessments

Any organisation / self-employed individual wishing to provide activities in connection with Penrhyn, Strathearn Preparatory Department. School must provide a risk assessment relevant to the activities being provided. An individual coach must adhere to risk assessments that have been made by the school in relation to the activities being provided.

4. Insurance

Any organisation / individual wishing to provide activities in connection with Penrhyn, Strathearn Preparatory Department. must have adequate insurance to cover the activities being provided. Individual coaches, engaged / employed by Penrhyn, Strathearn Preparatory Department. will be insured under the School's insurance.

5. Data Collection

Any organisation / individual wishing to provide activities in connection with Penrhyn, Strathearn Preparatory Department. must fulfil the data collection and processing requirements of the School. These requirements are as follows:

5.1 The Organisation / Individual is responsible for personal data of students and their parents and must be compliant with GDPR obligations.

5.2 The Organisation / Individual should make clear on any information or data collection forms that they are an external organisation / individual and that data will be processed in accordance with their GDPR policy. Parents should be made aware of how they can access this policy if required. Individual coaches, engaged / employed by Strathearn School, should make clear on any information or data collection forms that data will be processed in accordance with GDPR obligations. Parents should be made aware of how they can access the EA policy on data management if required.

5.3 Any information or data collection should provide details of how to contact the Organisation / Individual should a parent require to do so.

6. Termination of Agreement

The School can terminate its agreement with an organisation / individual if there is any breach of the safeguarding or GDPR requirements.

Agreement – Organisation / Self-employed individual

The following is an agreement between Strathearn School and _____

Details of The Organisation

Organisation / Individual's Address	
Telephone Number	
Email Address	

Details of Individual/s working with students

Name		Name	
Access NI Number		Access NI Number	
Name		Name	
Access NI Number		Access NI Number	

Documentation

<p>Documents Provided by Organisation / Self-employed individual:</p> <ul style="list-style-type: none"> <input type="checkbox"/> Safeguarding Policy <input type="checkbox"/> Code of Conduct for Staff <input type="checkbox"/> Risk Assessment <input type="checkbox"/> Insurance Details <input type="checkbox"/> Coaching Qualifications <input type="checkbox"/> First Aid Qualifications <input type="checkbox"/> Confirmation of Access NI certificate <input type="checkbox"/> Confirmation of completion of Child Protection training (Appendix 1 if individual has not attended face to face training at Strathearn) 	<p>Documents Provided by Penrhyn, Prep Department</p> <ul style="list-style-type: none"> <input type="checkbox"/> Safeguarding Policy <input type="checkbox"/> Code of Conduct for Staff
---	--

I have read and agree to the requirements set out by Strathearn School. I have provided the necessary documents and information as described in the agreement. I have been given a copy of the School's Safeguarding Policy and Code of Conduct for Staff and Volunteers.

Signed

On behalf of Strathearn School:		Date:	
---------------------------------	--	-------	--

Organisation / Individual:		Date:	
----------------------------	--	-------	--

All information provided on this form will be processed and held in accordance with the School's GDPR policy. If you require a copy of this, please contact the School's Bursar.

Agreement – Extra-curricular staff to include Coaches / Music Tutors

The following is an agreement between Penrhyn, Strathearn Preparatory Department and

Personal Details

Address			
Telephone Number			
Email Address			
Referees			
Name:		Name:	
Address:		Address:	

Documents Provided by Coach: <input type="checkbox"/> Access NI Return <input type="checkbox"/> Appropriate Qualification (if applicable) <input type="checkbox"/> First Aid Qualification (coaches / DoE staff only) <input type="checkbox"/> Confirmation of completion of Child Protection training (Appendix 1 if individual has not attended face to face training at Strathearn)	Documents Provided by Strathearn School: <input type="checkbox"/> Safeguarding Policy <input type="checkbox"/> Code of Conduct for Staff <input type="checkbox"/> Access NI application details <input type="checkbox"/> Payment details form <input type="checkbox"/> Child Protection training <input type="checkbox"/> GDPR training
---	--

Child Protection

If you were unable to attend child protection training, held in Strathearn School, please watch the training using the following link, <https://youtu.be/lqIPhQFsk7o>, complete the questions (Appendix 1) and return to E Andrews.

GDPR

Please complete GDPR training via the following link, <http://www.strathearnschool.org/gdpr>, and return a screen shot of your result to lturner549@c2ken.net.

I have read and agree to the requirements set out by Strathearn School. I have provided the necessary documents and information as described in the agreement. I have been given a copy of the school's Safeguarding Policy and Code of Conduct for Staff and Volunteers.

Signed:

On behalf of Strathearn School:		Date:	
Coach:		Date:	

All information provided on this form will be processed and held in accordance with the School's GDPR policy. If you require a copy of this, please contact the School's Bursar.

Appendix 1

Safeguarding and Child Protection Training

Follow the link <https://youtu.be/lqIPhQFsK7o> and watch the presentation on Safeguarding and Child Protection. It is important that you watch and understand the content of this presentation as it is a statutory requirement that you are trained to understand your responsibilities within safeguarding and child protection. Complete the details below and return to E Andrews. You will also be provided with a copy of the school's safeguarding policy which contains supplementary information regarding our policy and procedure.

Name: _____

To confirm that you have watched and understood the presentation please note the answers to the following questions:

1. What are the 4 broad categories of abuse?

2. Who is the School's Designated Teacher for Child Protection?

3. What should you do if have a concern that a child is showing signs of abuse?

4. If a child makes a disclosure of abuse, what should you never do?

5. After a child has made a disclosure what 2 things should you do?

Signed: _____ Date: _____

Please return to Mrs E Andrews via eandrews652@c2kni.net or the Penrhyn office.

